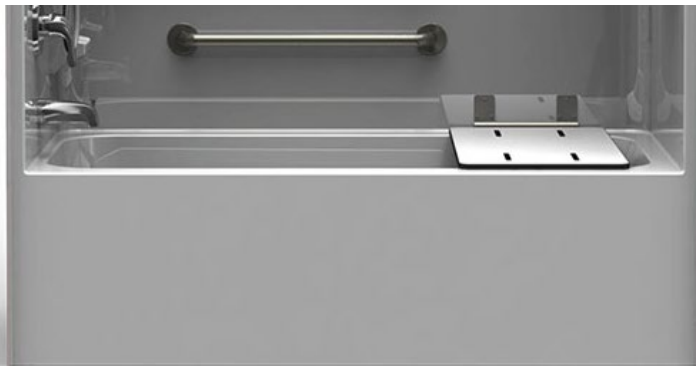


KNOW THE CODES

A PRACTICAL GUIDE TO CALIFORNIA'S TITLE 24 2019



Designing Code
Compliant Bathrooms

While most of California's building codes follow the standards set in the IBC, there are some major differences.



According to California state law, failure to comply with all of California's standards can lead to criminal charges, massive fines and possibly a contentious fight in civil court. For designers and builders, simply following the model codes isn't enough.

It's hard to know where to start.

In this guide, we'll outline **the key amendments California has made to the IBC**, focusing specifically on the specialized codes in Section 1134A.

You'll get the information you need to design safe, beautiful, code-compliant showers and baths in California. The material included here can be vital for designing code compliant bathrooms in senior care facilities, university housing, hospitals and multifamily homes.

WHAT THIS GUIDE WILL COVER:

- Proper shower dimensions
- Thresholds
- Clear floor space
- Grab bar installation
- Controls and bathroom fixtures

DISCLAIMER:

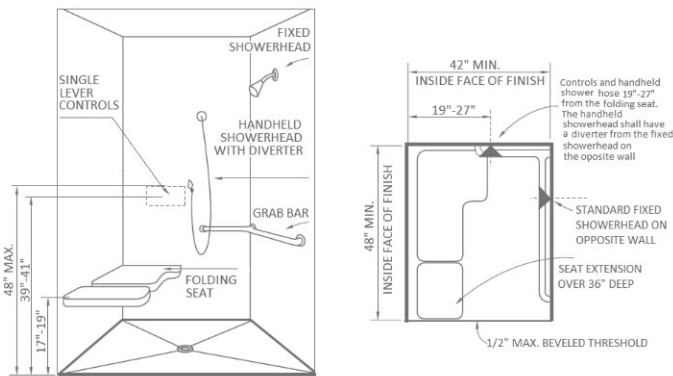
*Use this guide as a supplement and tool to better understand Title 24.
This guide should not be viewed or used as building code.*

SHOWERS

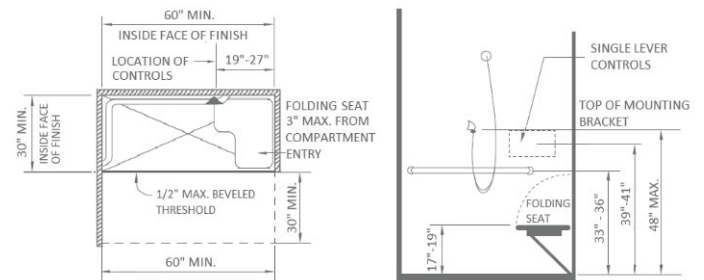
Proper Dimensions

When one or more shower stalls are provided within the same dwelling units, at least one shower needs to comply with ANSI B and one of these options:

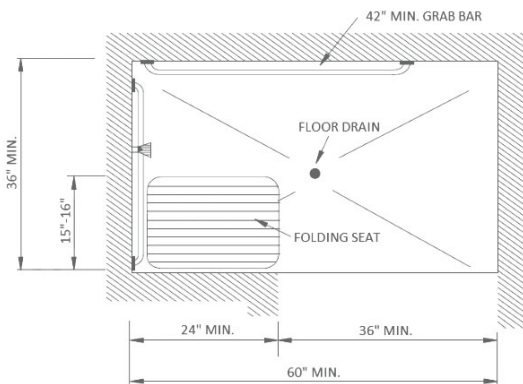
1 **42" wide by 48" deep** transfer shower with at least a 36" opening.



2 **60" wide by 30" deep** roll-in shower with a 60" opening. In this case, there needs to be 36" between the water closet and the shower wall.

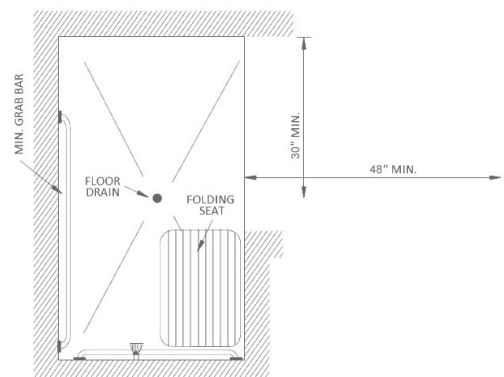


3 **60" wide by 36" deep** with at least a 36" opening, only if there's a wall installed on opening side.



MANEUVERABLE SPACE

In front of the shower, there needs to be **30" wide by 48" deep of clear floor space** accessible entry. This needs to be flush and parallel with the control wall.



SHOWERS

Thresholds & Floors

SLOPE

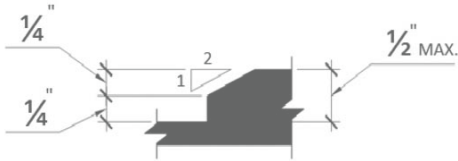
The slope needs to be $\frac{1}{2}$ " per foot in any direction and should slope to the drain. **(1134 A.6)**

FLOOR SURFACE

The floor surface needs to be slip-resistant, either made of Carborundum, grit-faced tile or some other slip-resistant surface. **(1134 A.6)**

THRESHOLDS

Shower thresholds can't be any taller than 2" and need to have a beveled edge that's no steeper than a 1:2 ratio. If a threshold is shorter than a $\frac{1}{2}$ " tall, a steeper beveled edge with up to a 1:1 ratio is also acceptable. **(1134 A.6)**

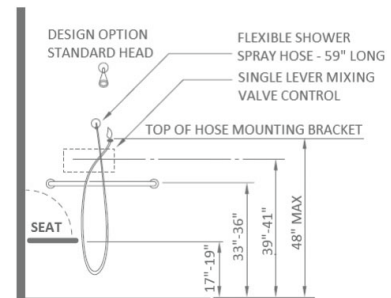


Controls

FAUCETS & CONTROLS

These need to be operable with **one hand**, using no more than **5 pounds of pressure**. They can't require tight grasping, pinching or twisting of the wrist to use. **(1134 A.6)**

Lever operated, push and electronic controls are considered accessible options. **(1134 A.6)**

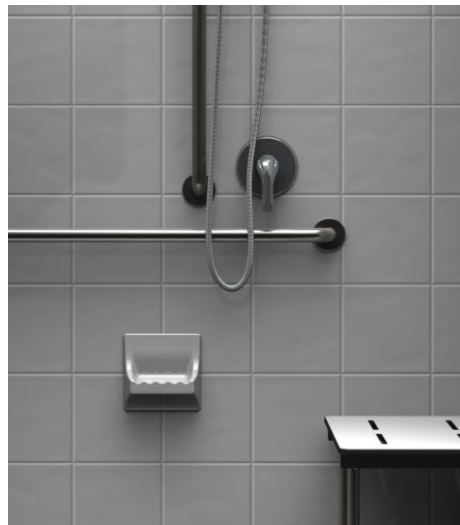


SHOWERS

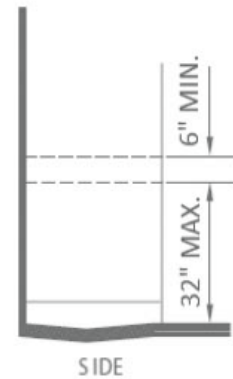
Grab Bars

REINFORCEMENT for grab bars needs to be installed continuously along the shower walls, between 32" and 38" above the shower floor. The reinforcement needs to be at least 6" nominal in height. **(1134 A.6)**

FOR SHOWERS WITH GLASS WALLS, there needs to be reinforcement for installing floor-mounted or ceiling-mounted grab bars instead. **(1134 A.6)**



REINFORCEMENT



(c) GRAB BAR REINFORCEMENT FOR ADAPTABLE SHOWERS

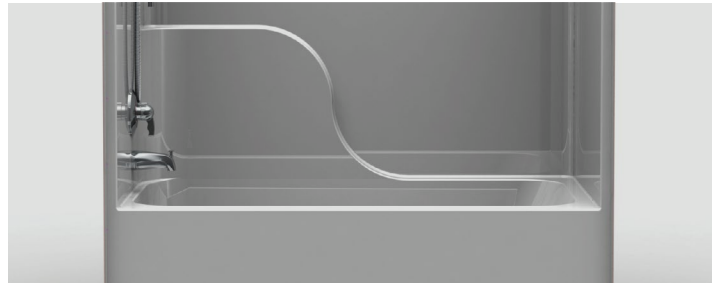
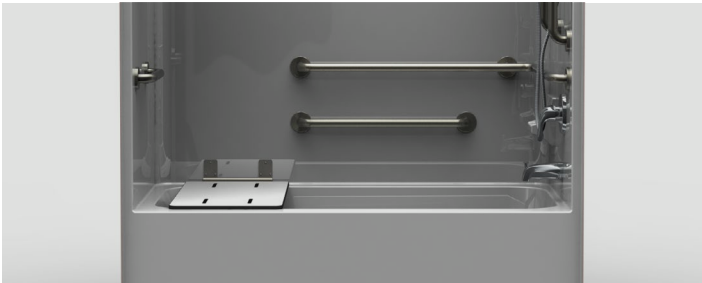
BATHTUBS

Floor Space

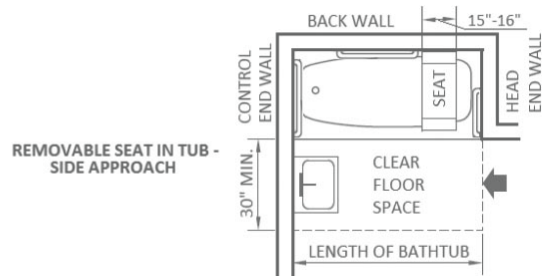
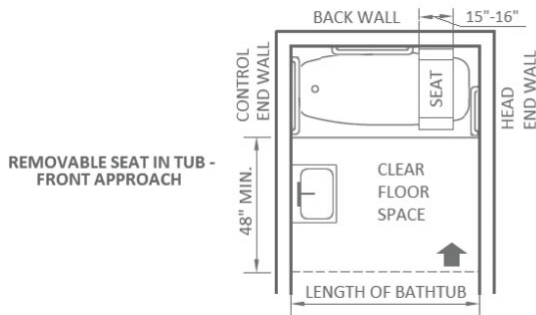
There should be a **CLEAR FLOOR SPACE** of 48" parallel by 30" perpendicular to the side of a bathtub or bathtub/shower combination. This will provide the space needed for an individual to safely transfer from a wheelchair into the tub.

THE EDGE of this floor space needs to be flush with the wall.

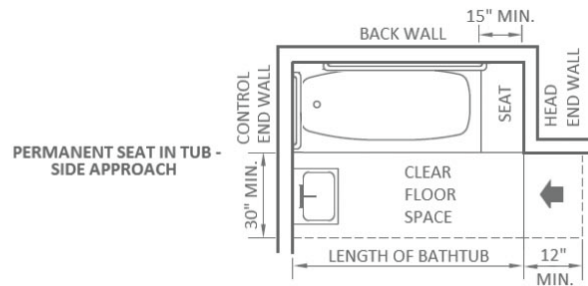
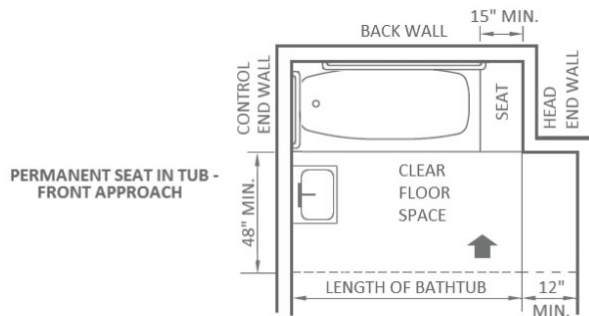
THE AREA UNDER A LAVATORY at the control end of the tub may be included in the clear floor space, as long as the lavatory is at least 19" deep.



REMOVABLE SEAT IN TUB



PERMANENT SEAT IN TUB



BATHTUBS

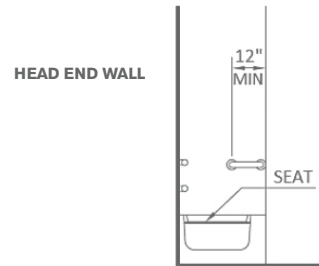
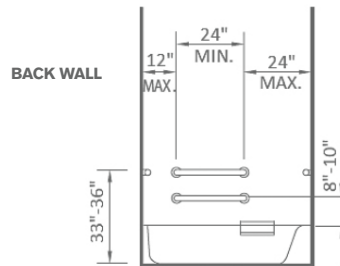
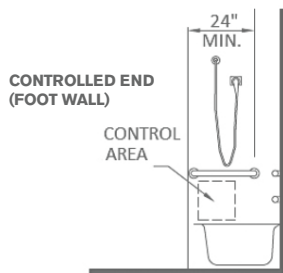
Grab Bars

On each end of the bathtub, there needs to be grab bar reinforcement installed between 32 and 38" above the floor and at least 24" away from the front edge of the bathtub. The reinforcement needs to be at least 6" nominal in height. **(1134 A.5)**

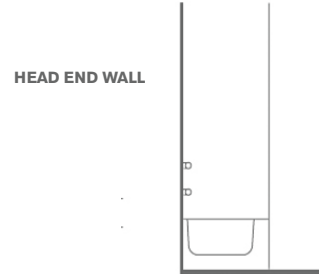
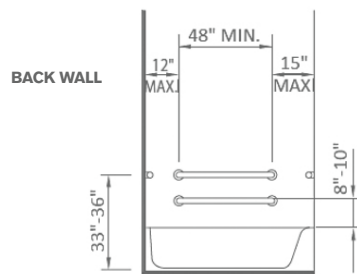
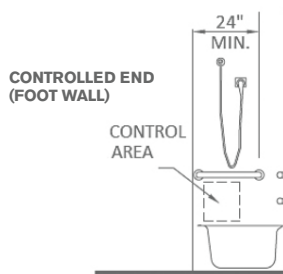
On the back wall of the bathtub, there needs to be grab bar reinforcement installed 6 inches above the rim, extending upward at least 38" above the floor. Grab bar backing should be installed horizontally to allow for the installation of a 48" grab bar with each end only 6" or less away from the end walls of the tub. **(1134 A.5)**

For bathtubs without surrounding walls, there needs to be reinforced areas that can allow for the installation of floor-mounted grab bars. **(1134 A.5)**

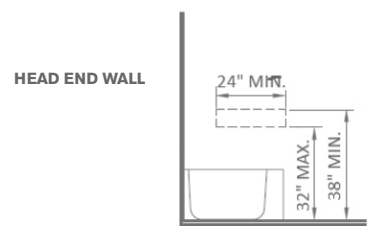
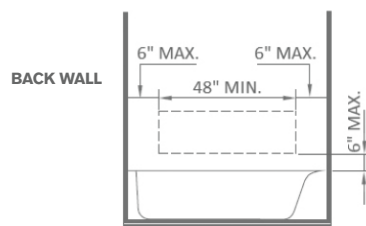
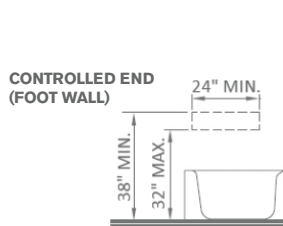
REMOVABLE SEAT IN TUB



PERMANENT SEAT IN TUB



ADAPTABLE BATHTUBS



COMPLIANT PRODUCTS

Bestbath offers a wide range of showers, baths, and pans that meet or exceed California Code requirements — many ready to ship within 24 hours.



TRANSFER



ROLL-IN



TUB SHOWER COMBO



SHOWER PAN

See all of Bestbath's California compliant options at [bestbath.com/products/showers/code-compliant/](https://www.bestbath.com/products/showers/code-compliant/)

About Bestbath

Bestbath designs and manufactures bathing solutions for people of all abilities. Over the 50 years we've been in business, we've worked with multifamily professionals all across the country to create safer, beautiful bathrooms. We know that multifamily homes demand timeless, high-end designs that can adapt to the needs of any tenant and meet even the most stringent code regulations.

That's why we build nearly all of our products to be compliant with regulations in the ADA, IBC and California's Title 24. We offer a variety of **barrier free, roll-in showers with beveled edges and code-compliant dimensions**. All of our shower and bathtub enclosures are built with **full wood backing** for easy installation of grab bars and shower seats. To prevent dangerous slips and falls, we apply an **anti-slip gelcoat** to the floors to each of our showers and tubs.

With a **30-YEAR WARRANTY**, our products can be installed in a day and loved for a lifetime.



NEED SOLUTIONS FOR YOUR NEXT PROJECT?

Check out some of our code compliant products:

- **Code Compliant Showers:** Available in a whole range of dimensions. Optional shower reveal feature for maximized clear floor space.
- **Shower Pans:** Offered with beveled edges.
- **Tub Shower Combinations:** Made from high-quality composites that can last a lifetime.
- **Grab Bars:** Grab bars made from stainless steel and in a range of dimensions.
- **Shower Seats:** High-quality commercial-grade seats.
- **WaterStopper:** A one-step water containment solution for barrier free showers.



BESTBATH PRODUCTS ARE MADE IN THE USA
and come with a 30-year limited warranty so you can relax knowing you're covered now and in the future.

www.bestbath.com

Toll Free 800.727.9907
Fax 208.333.8657
723 Garber Street
Caldwell, ID 83605

Reorder # FORM2052 08/20
Bestbath is a registered trademark of Best Bath System, Inc. © 2020 All rights reserved.

