



## WHO IS BESTBATH?

As a world-leading manufacturer of bathing products, we believe that bathrooms can be **as functional as they are beautiful.**

By creating quality products, we strive to **make bathrooms safer for *everyone.***

We're excited to have you join us.

*Better living begins with Bestbath.*



## OUR STORY

We started as Component Structures, Inc. We produced industry-standard bath products



1969



1971

Our CEO, Gary Multanen, started his career here as a plant manager

Multanen bought the company



1981



1993

We came out with our first line of barrier-free showers

All product lines were consolidated under the brand name, Best Bath Systems—or, simply, Bestbath

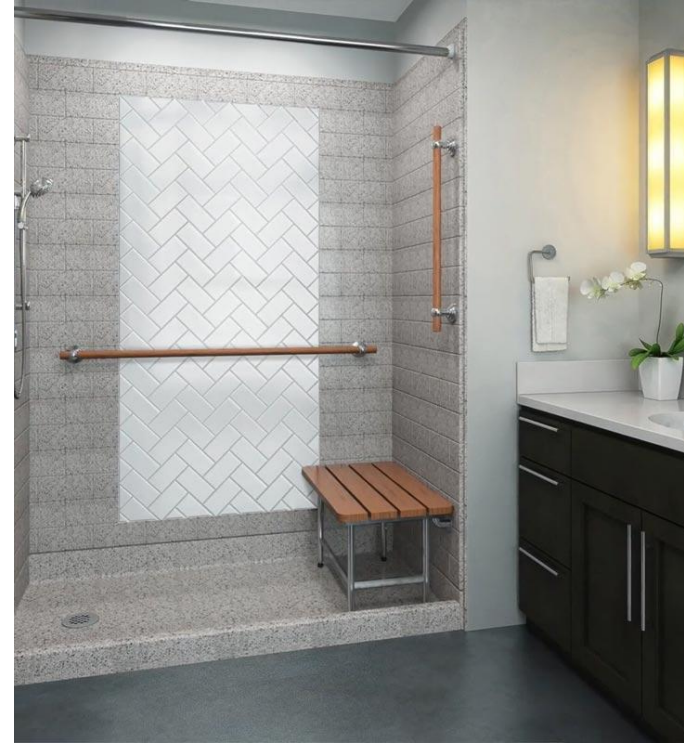


2000

*50 Years of Innovation*

We offer...

- **Shower pans**
- **Single piece and multi-piece shower systems**
- **Bathtubs**
- **Shower/bathtub combos**
- **Bathroom accessories**
- **Accessible products**





We've been designing innovative bathroom solutions for more than 50 years.

**During that time, we've made a lot of firsts in the industry.**



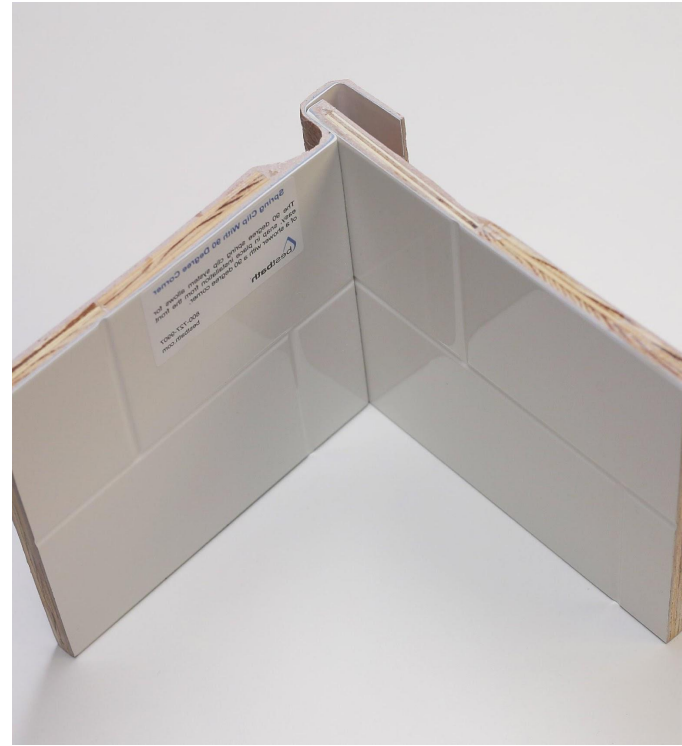


We are the only company who adds an **extra layer of protection** to our composite showers.

Our patented **barrier coat** ensures a consistent finish, **eliminating print-through** and maintaining the original shine of the product.

We designed composite showers with **90 degree corners.**

Customers can now have the **look of ceramic tile** but with **lower installation costs** and **less maintenance.**







We learned to pre-level our pans with integral support for **faster, no-error installations.**

We invented our **SnapJoint technology** over 10 years ago.

This innovative design creates **tighter seals** and **sturdier showers**, while making **installations easier than ever**.





We added **tile inset pockets** to our shower units for **customizable design**.

The result? Our customers can design the **beautiful showers** they want.



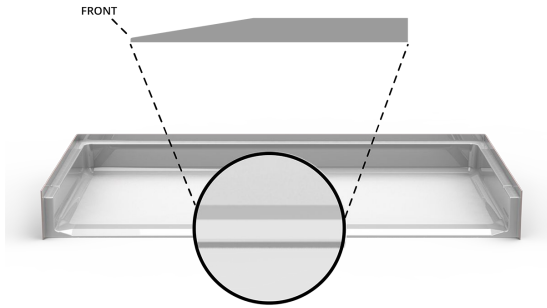


We designed our **durable, low-maintenance** shower pans to fit seamlessly into any space.

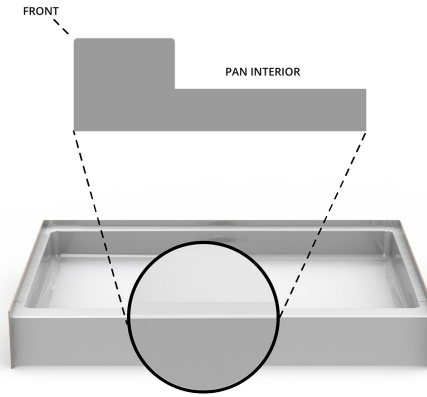
**Each one is...**

- **Pre-levleled** and **pre-sloped** for fast installation
- Applied with an **anti-slip gelcoat** to meet ASTM F-526-1994
- Made with **high density composite** backing
- Offered with a **variety of drain locations**

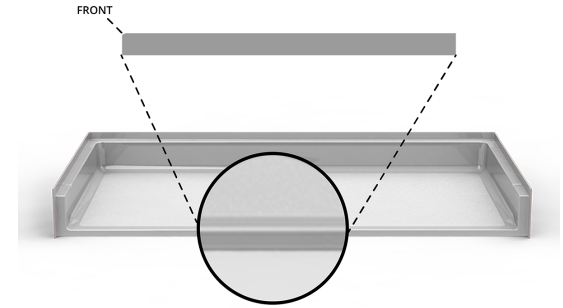
# SHOWER PANS



BEVELED



CURBED



TRADITIONAL

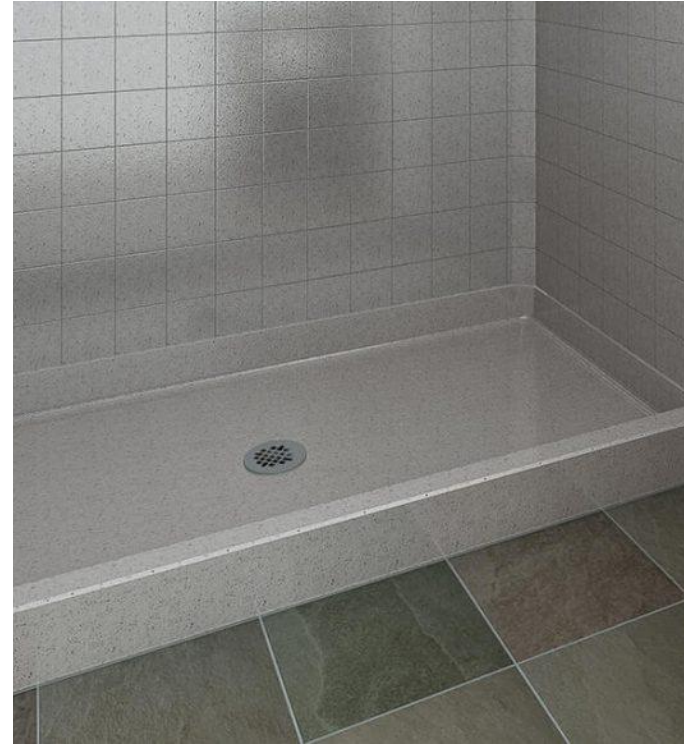
*We offer three different threshold types for our shower pans and showers.*

Our low threshold pans have the option of a beveled threshold for added accessibility.

- **Low threshold options:**  
**0.5" 0.75" 1" 1.25"**

Traditional threshold options come in a range of sizes.

- **Traditional threshold options:**  
**0.5" 1.5" 1.75" 2" 2.25" 5"**

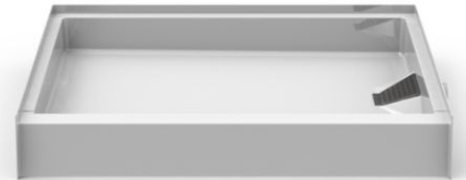


## DRAIN LOCATIONS



Customers can choose a drain position that fits their needs, style preferences and the requirements of the space:

- Traditional left, right, and center drain
- Front or rear trench drain
- Side discharge drain





Our **multi-piece showers** have endless opportunities for **customization**, allowing them to fit seamlessly into any **remodel or retrofit**.

Bestbath's **single piece units** can be quickly and **easily installed** into a new construction project and commercial projects.





### All Bestbath showers are...

- Sold with a SnapJoint wall assembly for **seamless, easy installation**
- Designed to be **directly installed into the subfloor**, cutting down on installation time and NO mud set
- Made with **full plywood backing** for added strength and easy installation of accessories
- Offered with a **variety of threshold heights**

Our tub/shower combinations are designed with all the same quality features found in all our products.

- **Low maintenance**
- **Durability**
- **Easy installation**
- **Multipiece and Singlepiece options**



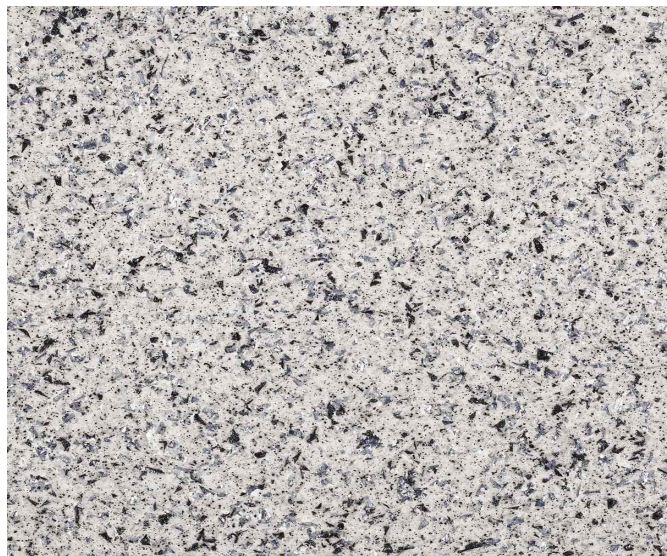


## DESIGN CUSTOMIZATION



*Our composite showers have look of tile — without the maintenance.*

## DESIGN CUSTOMIZATION



*Our Molten Stone options give a granite-like, textured look — in virtually any color.*



## DESIGN CUSTOMIZATION



*TileDesign — inset pockets for custom tile designs*

Our accessories help create bathrooms that are **as functional as they are beautiful.**

- **The WaterStopper** — a collapsible, self-adhesive rubber water dam for barrier-free showers
- **Grab bars** — Stainless steel, ADA-compliant grab bars available in a variety of shapes and sizes





- **Valve systems** — Moen, Delta and Symmons hardware that add function and style to any shower
- **Window and flange trim kits** — reduce (or eliminate) the need for drywall repair/replacement



- **Stainless steel curtain rods** — able to withstand sudden pressure
- **Weighted shower curtain/liners** — Mildew, fungus and staph resistant
- **Soap dishes**



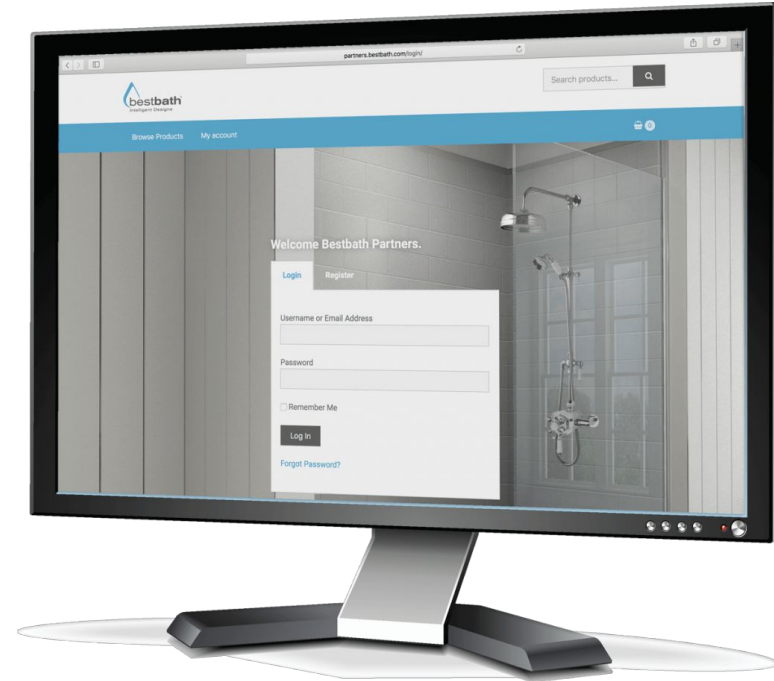


- **Semi-permanent threshold** — A removable shower curb designed to help customers meet aging-in-place goals
- **Shower seats and benches** — Designed for simple & fast installation. Padded seats, liftable seats, I-shaped seats and rectangular seats available.



We've created a variety of resources to help you sell our products.

You can find these all under the Marketing Resources section **on our Partner website.**



**Brand Guidelines** — includes everything from logos to formatting and typography

**Marketing Materials** — Flyers, print advertisements and website banners customized just for your dealership

**Product Information** — Downloadable PDFs of new or discontinued products, standard distribution terms and conditions, Prop 65 labels and more

A flyer layout for Bestbath. It includes a header with the text "make it your own..." and the Bestbath logo. The main body contains the text "About Bestbath" followed by a paragraph describing the company's products and services. Below this is a section for contact information, including the website "www.bestbath.com", phone and fax numbers, and the address "7225 Guster Street, Caldwell, ID 83605". There are also three small images showing different shower products. At the bottom right, there is a blue box with the text "Designer Series Accessibility has never looked better".

make it your own...

**About Bestbath**

Bestbath is the world's leading manufacturer of bathing products for people of all abilities. Our products — from walk-in tubs to traditional shower inserts — are designed to be functional and beautiful now, but also to be easily modified as needs and abilities change. Bestbath works closely with architects, commercial project developers and homeowners to ensure that our designs provide them with function and value today and for years to come.

For more information, contact your local Bestbath dealer.

**www.bestbath.com**  
Toll Free: 800.727.9907  
Fax: 208.333.6657  
7225 Guster Street  
Caldwell, ID 83605

**Designer Series**  
Accessibility has never looked better



**GreenSky Financial Program** — A financial program open to Bestbath Partners to help close more sales and improve business

**Training** — Educational modules to help you effectively sell Bestbath products

**Order Forms** — Makes placing your next order fast, easy and hassle-free

**Co-Op Opportunities** — [insert copy here]

THANK YOU

**We're excited to have you join us in this partnership.**

**We know that becoming a dealer is an incredible opportunity for you and your business.**

